

Anti-Rad60 (*S. pombe*) antibody, rabbit serum

63-003 50 ug

Rad60 protein (406 aa, 46 kDa) of *S. pombe* is required for repair of DNA double strand breaks which occur during replication, or induced by UV or gamma radiation, via recombination between sister chromatids. This has a subsequent role in the maintenance of chromosome structure. May work in conjunction with the Smc5-Smc6 complex.

Applications

Western blotting (1/1,000~2,000dilution)

Not tested for other applications

Immunogen: Recombinant full-size Rad60 protein of *S. pombe* produced in *E. coli*

Form: Whole rabbit antiserum added with 0.09% sodium azide.

Storage: Sent at 4°C and store at -20°C

Data Link: UniProtKB/Swiss-Prot [Q9USX3](#) Schizosaccharomyces pombe

- Gene ID: [2540802](#) Schizosaccharomyces pombe

Reference

Miyabe I, Morishita T, Shinagawa H, Carr AM. Schizosaccharomyces pombe (2009) Cds1Chk2 regulates homologous recombination at stalled replication forks through the phosphorylation of recombination protein Rad60. J Cell Sci. 122: 3638-43. [PMID:19755492](#) WB

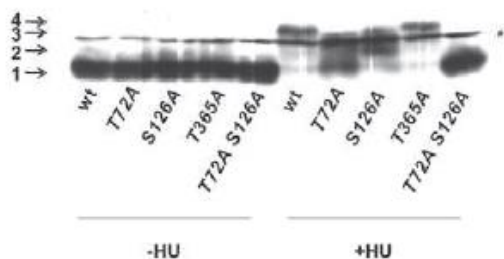


Figure. Identification of Rad60 protein phosphorylation in vivo by western blot. Cell extracts of wild-type strain and mutant strains with alterations in putative phosphorylation sites in Rad60. Arrows indicate distinct forms of Rad60 following exposure of cells to 15 mM HU for 4 h. * indicates a nonspecific band.